

SPECIMEN

**Blackest**

an Italian **Blacker**



ZETAFONTS FOUNDRY



**Name:** Blackest  
**Classification:** Italian Reverse Contrast  
**Publisher:** Zetafonts Type Foundry  
**Designers:** Cosimo Lorenzo Pancini  
Francesco Canovaro  
Andrea Tartarelli

**Release year:** 2018  
**Styles:** 8  
**Available:** [www.zetafonts.com/blackest](http://www.zetafonts.com/blackest)

## ABOUT

**Blackest** is an inverse contrast wedge serif typeface family, designed by **Francesco Canovaro** and **Andrea Tartarelli** as a development of the **Blacker** typeface designed by **Cosimo Lorenzo Pancini**. The classical skeleton and sharp edges of the original have been kept while bringing the contrast of the typeface in the realm of the so called "italian" or reverse-contrast typefaces. The result is a typeface family that manages to be quirky but classical, and playful without losing elegance. With its exuberance and six weights of eye-catching proportions, **Blackest** is perfect for display use: editorial & magazine design, poster design and logo development - but to allow its usage as a for typesetting of longer texts a text variant in two weights has been developed, with less contrast, looser spacing, and high readability. **Blackest** features an extended character set that covers over 220 languages using the Latin alphabet, as well as Russian Cyrillic. Open type features include small caps, positional figures, alternate letter forms, stylistic sets, arrows and extra punctuation and discretionary ligatures.



## STYLES

Blackest Light

Blackest Regular

Blackest Medium

Blackest Bold

Blackest ExtraBold

Blackest Black

Blackest Text Regular

Blackest Text Bold





**\*Değiştirilemez Teklif\***

The sun machine is coming down, and we're gonna have a

**Sexårsåldern är en lagom**

Always forgive your enemies; nothing annoys them so much

**«Ert þú Bókstafstrúar?»**

“Those who believe in telekinetics, well, raise my hand.”

**Reiser Til Jomfruøylene**

The cure for boredom is curiosity. There is no cure for it

**Unterstützung Gemäß**

Ground Control to Major Tom. Can you hear me, Major

**Uit Van Reënboognasie**

You miss 100 % of the shots you never take. Do you?

**Antifašistická Akcia!!**

The truth will set you free. But not until it is finished with you.

**Cantina Castelões™**

→ The richest man is not he who has the most, but he who



PAŞALĂCUL BUDA !!

Saturn ascends, the one, the ten. Ignorant to the damage...

DE NEÎNDEPLINIRE

We are what we repeatedly do; excellence, then, is not an act

FRANĠISKU JĈEMPEL

«We can be heroes, forever and ever What d'you say?»

AZGARAD FETIŞISM?

[...] I worry about being a success in a mediocre world <sup>(2)</sup>

150 COPII FRUMOSI

We are choosing to be here right now hold on, stay inside

¿ES INESCRUTABLE?

I'd rather live with a good question than a bad answer.

LÄBIVIIMISESSE<sup>(\*)</sup>

To the man who only has a hammer, everything he encounters

DOSTALI NAJĎALEJ

Feed my will to feel this moment Urging me to cross the line



## TEXT PROOF

Text Regular&amp;Bold 10 pt

The so-called 'psychotically depressed' person who tries to kill herself doesn't do so out of quote 'hopelessness' or any abstract conviction that life's assets and debits do not square. **And surely not because death seems suddenly appealing.** The person in whom Its invisible agony reaches a certain unendurable level will kill herself the same way a trapped person will eventually jump from the window of a burning high-rise. Make no mistake about people who leap from burning windows. Their

Text Regular 20 PT

The so-called 'psychotically depressed' p

Text Bold 20 PT

**herself doesn't do so out of quote 'h**

Light 20 PT

abstract conviction that life's assets and deb

Regular 20 PT

surely not because death seems suddenly a

Medium 20 PT

whom Its invisible agony reaches a certain

Bold 20 PT

**kill herself the same way a trapped perso**

ExtraBold 20 PT

**from the window of a burning high-rise.**

Black 20 PT

**about people who leap from burning wi**

The Man Without Qualities

Light 40 PT

“A barometric low hung

Regular 40 PT

over the Atlantic. It

Medium 40 PT

moved eastward toward

Bold 40 PT

a high-pressure area

ExtraBold 40 PT

over Russia without(...)

Black 40 PT



---

20pt / 24 – Mixed Weights

**Nero** (Latin: Nero Claudius Caesar Augustus Germanicus) was the last Roman emperor of the Julio-Claudian dynasty. He was born Lucius Domitius Ahenobarbus on 15 December 37 ad in **Antium**. Nero was adopted by his great-uncle Claudius and became his heir and successor. Nero's mother, **Agrippina the Younger**, was likely implicated in Claudius' death and Nero's nomination as emperor.

---

16pt / 20 – Mixed Weights

During the early years of his reign, Nero was content to be guided by his mother, his tutor Lucius Annaeus Seneca and his Praetorian prefect, **Sextus Afranius Burrus**. As time passed, he started to play a more active and independent role in government and foreign policy. During his reign, the redoubtable **general Corbulo** conducted a successful war and negotiated peace with the Parthian Empire. His general Suetonius Paulinus crushed a major revolt in Britain, led by the Iceni Queen Boudica. Nero focused much of his attention on diplomacy, trade and the cultural life of the empire.

---

12pt / 16 – Mixed Weights

Nero's rule is usually associated with tyranny and extravagance. Most Roman sources, such as **Suetonius and Cassius Dio**, offer overwhelmingly negative assessments of his personality and reign. Tacitus claims that "the Roman people thought him compulsive and corrupt". Suetonius tells that "many Romans believed that the Great Fire of Rome was instigated by Nero to clear the way for his planned palatial complex, the **Domus Aurea**." According to Tacitus he was said to have seized Christians as scapegoats for the fire and burned them alive, seemingly motivated not by public justice but by personal cruelty. **Some modern historians question the reliability of the ancient sources on Nero's tyrannical acts.** A few sources paint Nero in a more favorable light. There is evidence of his popularity among the Roman commoners, especially in the eastern provinces of the Empire, where a popular legend arose that Nero had not died and would return.

---

10pt / 14 – Mixed Weights

Nero's father, Domitius, **died in 40**. A few years before his death, Domitius had been involved in a political scandal that, according to Malitz: "could have cost him his life if Tiberius had not died in the year 37, since in the previous year, Nero's mother Agrippina had been caught up in a scandal of her own". **Caligula's beloved sister Drusilla** had recently died and Caligula began to feel threatened by his brother-in-law **Marcus Aemilius Lepidus**. **Agrippina**, suspected of adultery with her brother-in-law, was forced to carry the funerary urn after Lepidus' execution. Caligula then banished his two surviving sisters, Agrippina and Julia Livilla, to a remote island in the Mediterranean Sea.

According to The **Oxford Encyclopedia** of Ancient Greece and Rome, Agrippina was exiled for plotting to overthrow Caligula.

---

8pt / 12 – Mixed Weights

Caligula's reign lasted from 37 until 41. He died from multiple stab wounds in January of 41 after being ambushed by his own Praetorian Guard on the Palatine Hill. Claudius succeeded Caligula as Emperor. Agrippina married Claudius in 49 ad and became his fourth wife. By February 49, she had persuaded Claudius to adopt her son Nero. **After Nero's adoption**, "Claudius" became part of his name: Nero Claudius Caesar Drusus Germanicus. Claudius had gold coins issued to mark the adoption. Classics professor Josiah Osgood has written that "the coins, through their distribution and imagery alike, showed that a new Leader was in the making." **David Shotter noted that, despite events in Rome, Nero's step-brother Britannicus was more prominent in provincial coinages during the early 50s.**

The ancient biographer Suetonius, who was critical of Nero's ancestors, wrote that Augustus had reproached Nero's grandfather for his unseemly enjoyment of violent gladiator games. According to Jürgen Malitz, Suetonius tells that Nero's father was known to be "irascible and brutal", and that both "enjoyed chariot races and theater performances to a degree not befitting their position."

## STYLISTIC ALTERNATES

Stylistic Alternates or Stylistic Sets were designed to offer a secondary form of a character.

Quarga Kijóðæri  
 ↓  
 Quarga Kijóðæri  
 SS02 SS02

## STYLISTIC SET 01, 02, 03, 04, 05

There are more than one **Stylistic Set**. Check out the possibilities of text appearance that offers you.

a a o y y

A AND AT

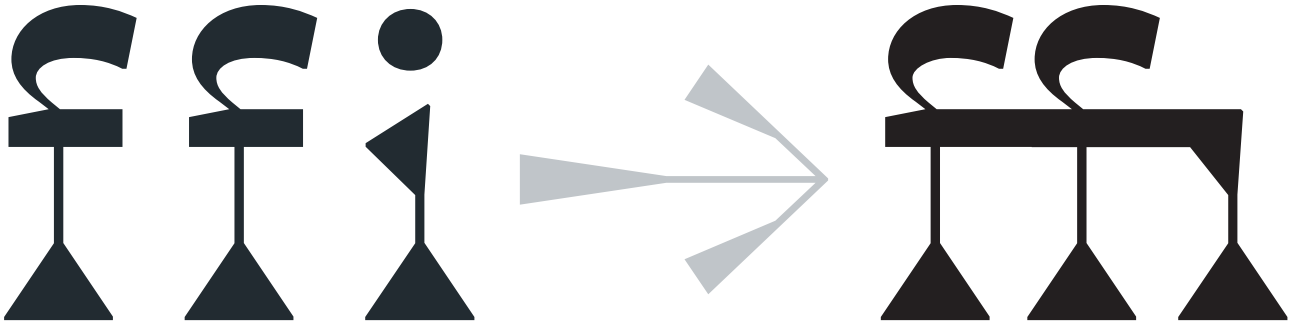
## STYLISTIC SET 05 LIST

A AND AT BY &CO. FOR IN IS NO NOT OF OR THE TO YES



STANDARD  LIGATURES

The **Stylistic Alternates** are designed to correct awkward text combinations of letters, such as fi, ffi, fb. Such ligatures are applied by default

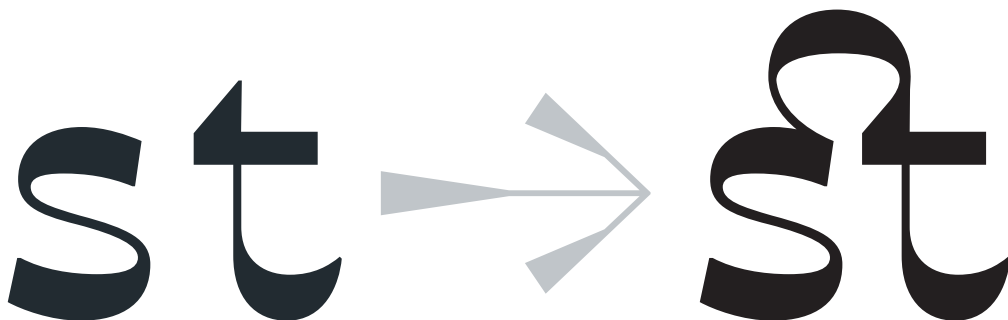


## LIGATURE LIST

fb ffi ff fh ffh fi ffi fj fjj fk ffk il iil it

DISCRETIONARY  LIGATURES

**Discretionary Ligatures** are ligatures applied at the user's discretion, such as ct, st, Th, sp.



## LIGATURE LIST

ch ck cl cp ct sh sk sp st tt im ih ip ir it  
Th ME MU NE NK NN TT TY UM UN VA AA

## SPECIAL LIGATURES

The **Special Ligatures (Discretionary Ligatures)** offers you the possibility to get special symbols by using key combinations without the glyph panel. These are applied by default such as standard ligatures

### CIRCULAR NUMBER

(1)(2)



① ②

### BLACK CIRCULAR NUMBER

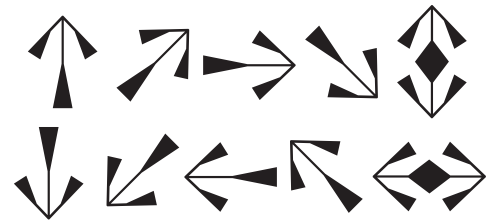
((1))((2))



● 1 ● 2

### ARROWS

<+-/|+>



## LETTER COMBINATION

There are also **Special letter combinations (Discretionary Ligatures)** offers you the possibility to get special symbols by using key combinations without the glyph panel. These are applied by default such as standard ligatures

### NUMBER

### COPYRIGHT

### REGISTERED

### PUBLISHED

### TRADEMARK

[No.]

(C)

(R)

(P)

[TM]



[No.]

©

®

®

™



## ALTERNATE FIGURES

**Tabular Figures** are especially useful when setting columns of numbers, such as in financial reports.

## PROPORTIONAL LINING

123



## TABULAR LINING

| 1 | 2 | 3 |

## PROPORTIONAL OLD STYLE

123



## TABULAR OLD STYLE

| 1 | 2 | 3 |

## POSITIONING FIGURES/FRACTIONS

Theses various kind of figures are used for fractions, footnote references, chemical compounds, and as mathematical exponents.

1<sup>3</sup>/<sub>4</sub>

FRACTION

H<sub>2</sub>O

SUBSCRIPT-INFERIOR

D<sub>2.2</sub>

DENOMINATOR

1<sup>st</sup>

ORDINALS

X<sup>12s</sup>

SUPERSCRIT-SUPERIOR

N<sup>1,2</sup>

NUMERATOR



SMALLCAPS

Small Caps feature substitutes lowercase with a capital versions of the letters sets within the x-height

Interrobang? «What?»



INTERROBANG? «WHAT?»

CYRILLIC AND SPECIAL CHARACTERS







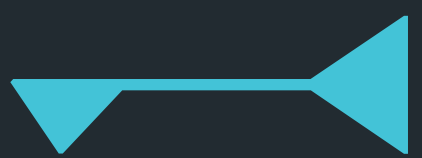
950+ CHARS  
220+ LANGUAGES  
2 SCRIPTS: LATIN, CYRILLIC

### COMMON LANGUAGES

Afrikaans, Albanian, Asu, Azerbaijani, Basque, Bemba, Bena, Bosnian, Breton, Bulgarian, Catalan, Chiga, Colognian, Cornish, Croatian, Czech, Danish, Dutch, English, Esperanto, Estonian, Faroese, Filipino, Finnish, French, Friulian, Galician, Ganda, German, Greek, Gusii, Hungarian, Icelandic, Inari Sami, Indonesian, Irish, Italian, Jola-Fonyi, Kabuverdianu, Kalenjin, Kinyarwanda, Low German, Lower Sorbian, Luo, Luxembourgish, Luyia, Macedonian, Machame, Makhuwa-Meetto, Makonde, Malagasy, Malay, Maltese, Manx, Morisyen, North Ndebele, Northern Sami, Norwegian Bokmål, Norwegian Nynorsk, Nyankole, Oromo, Portuguese, Quechua, Romansh, Rombo, Rundi, Russian, Rwa, Samburu, Sango, Sangu, Scottish Gaelic, Sena, Serbian, Shambala, Shona, Slovak, Slovenian, Soga, Somali, Spanish, Swahili, Swedish, Swiss German, Taita, Teso, Turkish, Turkmen, Ukrainian, Upper Sorbian, Vunjo, Walser, Welsh, Western Frisian, Wolof, Zulu



ZETA  
FONT  
S  
FOUNDRY

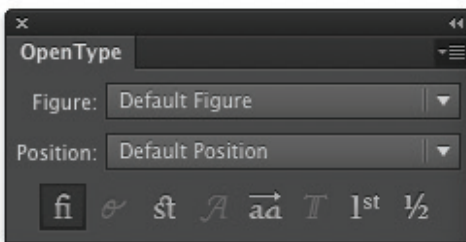


The origin of the city's name is thought to be that of the reputed founder and first ruler, the legendary Romulus. It is said that Romulus and his twin brother Remus, apparent sons of the god Mars and descendants of the Trojan hero Aeneas, were suckled by a she-wolf after being abandoned, then decided to build a city. The brothers argued and then named the city Rome after himself.

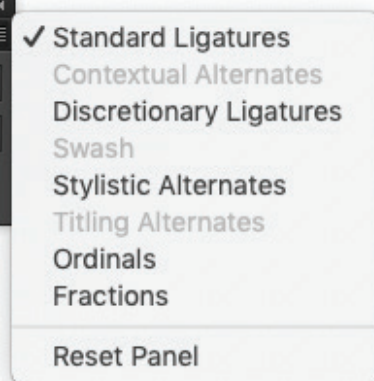
## HOW TO USE FEATURES

Blackest have a tons of ligatures for uppercase and lowercase too, and also swashes and alternate letters.

To activate all the features in Illustrator and in InDesign you can select the options in the opentype panel.



To activate opentype panel go to:  
 menu → window → type → opentype panel

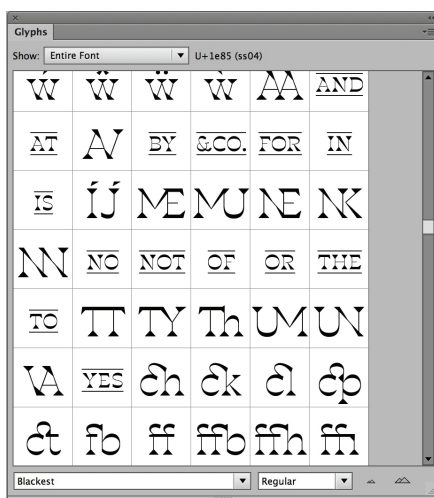


The OpenType format makes it possible to incorporate typographic features, such as small caps, ligatures, old style numerals and lining numerals, all within one font file, thereby simplifying font management and usage.

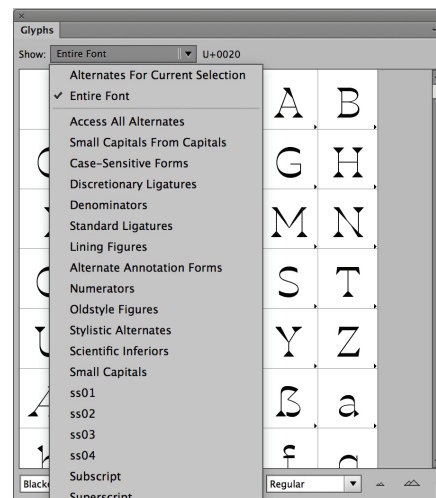
## USE SPECIAL FEATURES AND STYLE SETS

Illustrator's Glyphs panel provides quick access to a wide range of special characters. With the Type tool, click to

place the insertion point, then double-click the character you want to place in the text from the Glyphs panel.



To activate glyph panel go to:  
 menu → window → type → glyph panel



You can select the stylistic set you want to be display





## AVAILABLE FORMATS AND INSTALLATION SPEC

In the package are available the most common file format for every purpose:

**TTF, OTF, EOT, WOFF, WOFF2.**

### ⇒ Install on Windows 10

Once downloaded, right-click on the file, select “Extract All”. After extraction (or accessing the file at its downloaded destination), right-click on the file and select “Install”. Otherwise navigate to Cortana’s search field on the taskbar, type “**Control Panel**” and click the corresponding result. **With the Control Panel** open, navigate to “Appearance and Personalization” and click on “Fonts” in the main window. Here you can **Drag and Drop** your files.

### ⇒ Install on Mac OS

Double click the unzipped font file and **Font Book** will open a preview of the font. Click “Install Font” at the bottom of the preview.

#### HOW TO GET THE FONT

In order to use our fonts in a commercial project, you need to pay a license fee that varies according to usage and number of users. Acquiring a license on our website [www.zetafonts.com](http://www.zetafonts.com) is the fastest way. You will be able to download the fonts immediately after the payment. Our website accepts payments with credit card or with PayPal account, both using PayPal POS that accepts all main credit cards. For more information about licensing, visit [www.zetafonts.com/licensing](http://www.zetafonts.com/licensing)

#### TRY BEFORE YOU BUY

Our fonts are free to try and for personal/non-commercial use. You can download the trial version in order to test the integration in your design by visiting the font page on [www.zetafonts.com](http://www.zetafonts.com)

#### CUSTOM FONT

Custom fonts is part of the services we offer as a type foundry. This include design completely new typefaces, modifications of existing ones, or creation of special language sets. For more information visit: [www.zetafonts.com/custom-fonts](http://www.zetafonts.com/custom-fonts)

#### WEBFONTS

All Zetafonts typefaces are available also as webfonts as self-hosting webfont licence. We provide the fonts as EOT, WOFF, WOFF2 formats.



Zetafonts is a ligaure srl division

LIGATURE  
SRL

Ligature srl  
via ghibellina 100  
50122 Florence  
Italy

[info@zetafonts.com](mailto:info@zetafonts.com)  
[www.zetafonts.com](http://www.zetafonts.com)

Zetafonts is an independent digital type foundry run by an Italian type designer Team and currently based in Florence. It has spent more than a decade designing typefaces for print, digital, environmental design, branding and corporation. Besides creating a wide range of high quality retail typefaces, Zetafonts also provides custom typeface design services for commercial and institutional clients.

© 2018 Ligature srl.  
All rights reserved.

WWW.ZETA FONTS.COM



ZETA FONTS  
FOUNDRY

INFO@ZETA FONTS.COM